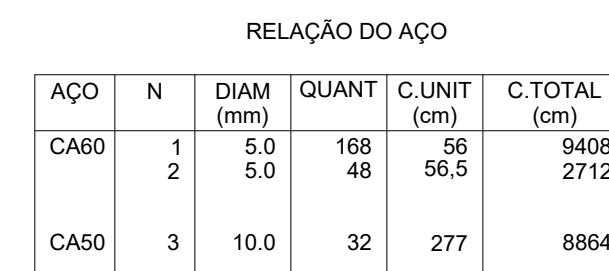
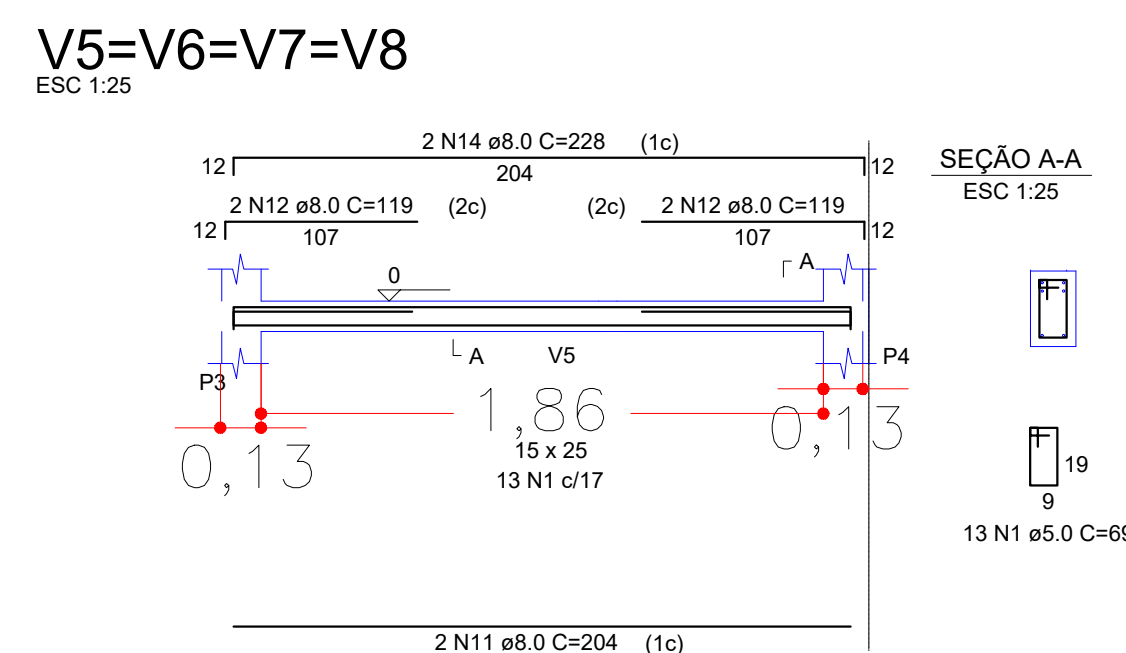


	CONCRETO (m³)	FÖRMA (m²)
PILAR	2,10	2.32
TOTAL	2.10	2.32



AÇO	DIAM (mm)	C.TOTAL (m)	PESO + 10% (kg)
CA50	10.0	88,64	60.16
CA60	5.0	121,20	20.53
PESO TOTAL (kg)			
CA50	60.16		
CA60	20.53		

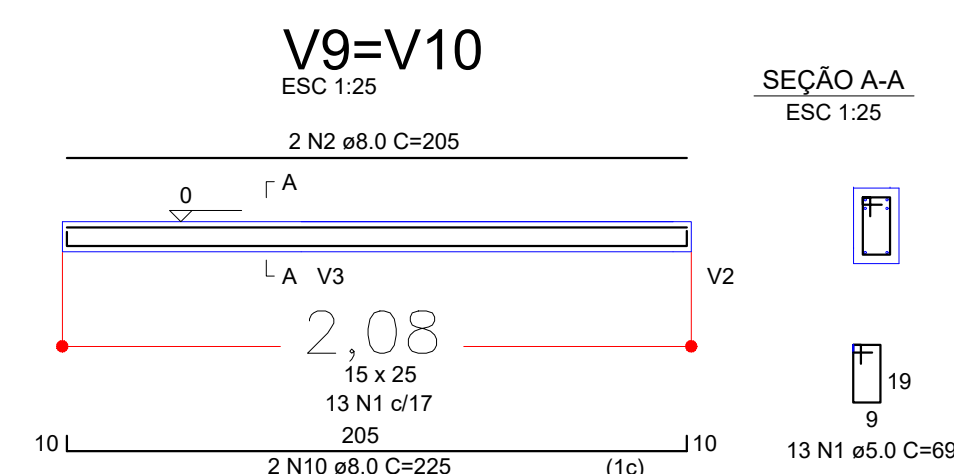
	CONCRETO (m³)	FÓRMA (m²)
PILAR	0.50	17.92
TOTAL	0.50	17.92



RELAÇÃO DO AÇO					
V1		V2		V3	
V4		V5		V6	
AÇO	N	DIAM (mm)	QUANT	C.UNIT (cm)	C.TOTAL (cm)
CA60	1	5,0	154	69	10626
CA50	2	10,0	4	205	820
	3	10,0	8	319	2552
	4	8,0	8	119	952
	5	8,0	8	148	1184
	6	10,0	8	376	3008
	10	10,0	4	225	900
	11	10,0	8	204	1632
	12	8,0	8	119	952
	13	8,0	8	119	952
	14	10,0	8	228	1824

AÇO	DIAM (mm)	C.TOTAL (m)	PESO + 10% (kg)
CA50	8.0	42.80	18.60
	10.0	107.36	72.87
CA60	5.0	106.26	18
PESO TOTAL (kg)			
CA50	91.47		
CA60	18.0		

	CONCRETO (m³)	FÔRMA (m²)
VIGA	0.97	12.86
TOTAL	0.97	12.86



PROPRIETÁRIO:		
PREFEITURA MUNICIPAL DE ESPLANADA		
RESPONSÁVEL TÉCNICO:		
ADILTON DA CONCEIÇÃO SANTOS ENGENHEIRO CIVIL CREA-BA: 3000141104-BA		
PROJETO		
REFORMA DA PRAÇA LADISLAU CAVALCANTE		
LOCAL: Avenida Mario Andreazza, Centro, Esplanada-Bahia		
PLANTA:		
DETALHAMENTO QUIOSQUES		
ESCALA:	INDICADA	CONTROLE:
PROJETO:	ESTRUTURAL	DATA: 25/07/2025